

# MONTHLY MEMBERSHIP PROGRESS REPORT

District 324 B

Results as of: 4/30/2024

GMT:

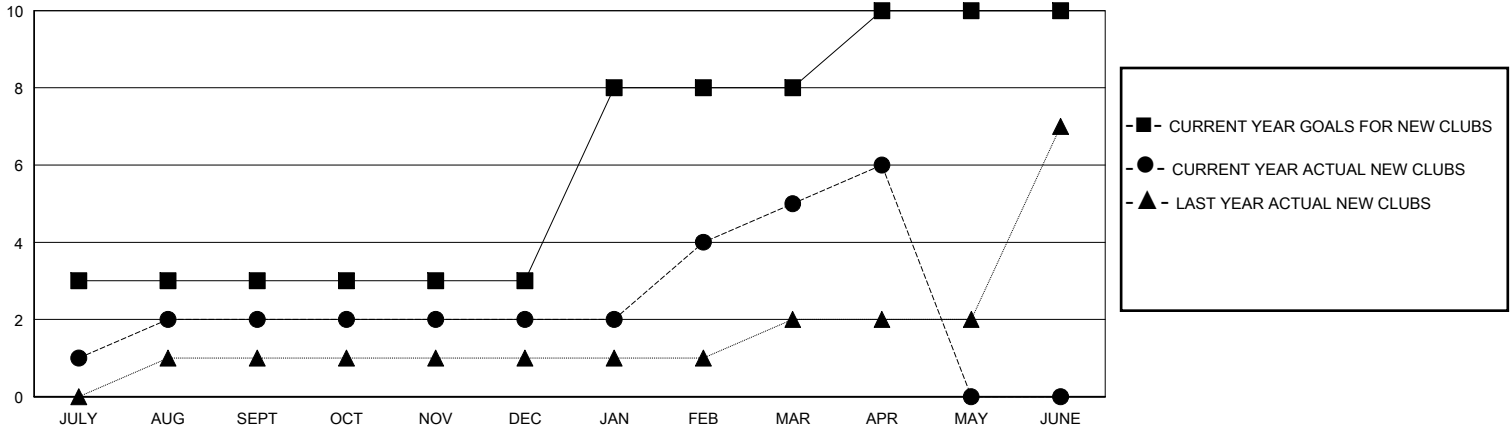
LOCATION INDIA

GMT CA

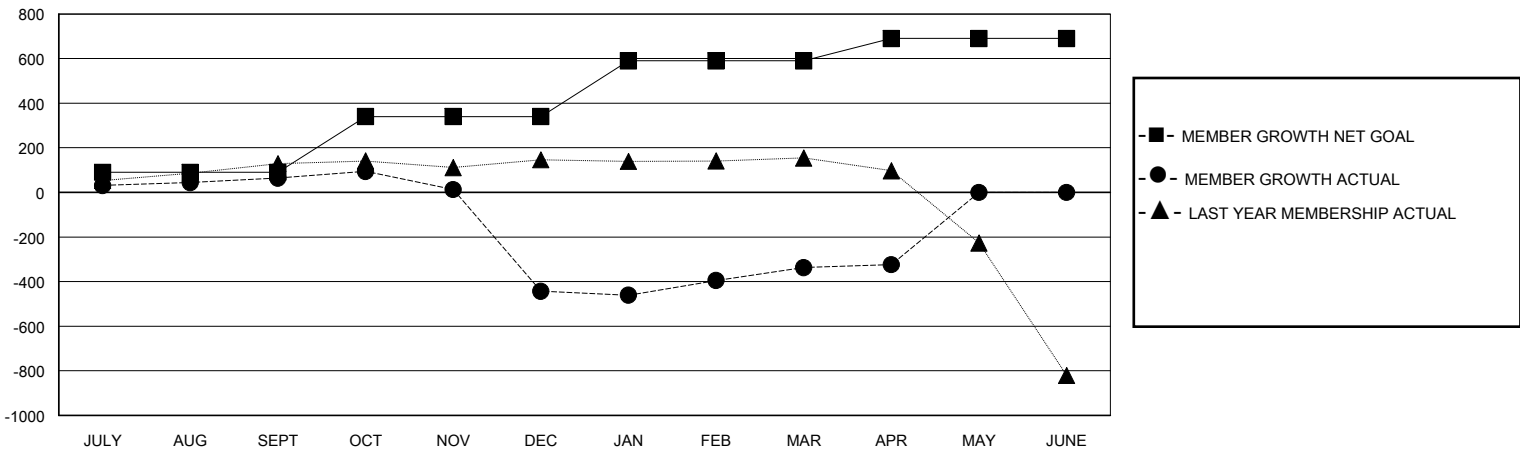
Clubs			
RESULTS FOR 2023-2024			
QUARTER	NEW CLUB GOAL	NEW CLUBS	DROPPED CLUBS
JULY/AUG/SEPT	3	2	3
OCT/NOV/DEC	0	0	6
JAN/FEB/MAR	5	3	2
APR/MAY/JUNE	2	1	0

Members			
RESULTS FOR 2023-2024			
QUARTER	MEMBER GROWTH NET GOAL	MEMBER GROWTH ACTUAL	DROPPED MEMBERS ACTUAL (including transfers)
JULY/AUG/SEPT	90	383	278
OCT/NOV/DEC	250	63	561
JAN/FEB/MAR	250	240	74
APR/MAY/JUNE	100	49	24

GOALS AND ACTUAL NEW CLUBS CUMULATIVE



GOALS AND ACTUAL MEMBERS CUMULATIVE



<b>DROPPED CLUBS: 11</b>	114 CLUBS OF 189 ADDED 1 OR MORE NEW MEMBERS	<b>GENDER DISTRIBUTION</b>	
		MALE 4,962 (81.05%)	FEMALE 1,156 (18.88%)
<b>DROPPED MEMBERS</b>		<a href="#">CLICK HERE FOR CUMULATIVE MEMBERSHIP DATA</a>	TOTAL FAMILY UNIT MEMBERS 2,783
DECEASED 19	CLUB CANCELLED 174		FAMILY MEMBERS PAYING HALF DUES 1,707
OTHER 744	TOTAL 937		